

TWP-1010-BSW



Main Features

- Designed with robust features to enable operation and convenient maintenance in production environments.
- TWP-1010-BSW is an IP69K waterproof panel PC based on a quad core Intel Atom x5-E8000 or Pentium N3710 processor.
- 10.1 inch Projective Capacitive (multitouch) high resolution (1280 x 800), bright (350 nits) widescreen LCD with LED backlight.
- A range of off-the-shelf power, networking and expansion options.
- Stainless steel SUS304/SUS316L enclosure and bezel.



Specifications

Core System

Processor	Atom x5-E8000 (4x 1.04GHz) Pentium N3710 (4x 1.60GHz)
Architecture	x86 (Braswell)
BIOS	UEFI AMI BIOS
Memory	up to 8GB SO-DIMM DDR3L
Storage	M.2 SSD

Connectivity

Network LAN	1x Intel i210 Gigabit LAN
Power over Ethernet	PoE function 802.3at (optional)
Wi-Fi/Bluetooth	Qualcomm QCA9377 (optional) 802.11 a/b/g/n/ac + BT 5 (BR+EDR+BLE)

Expansion Interfaces

Expansion Slots	3x M.2 (WiFi/SATA/LTE) slot
-----------------	-----------------------------

External Connectors

Network	1x 8-pin M12
USB	1x 8-pin M12 (2x USB 2.0 Host)
Serial	1x 8-pin M12 (1x RS-232)

Video

Video Decode	1080p240 H.264
Video Encode	1080p120 H.264

Display

LCD	10.1 inch widescreen LCD with LED backlight
Resolution	1280 x 800 pixels
Luminance	350 cd/m ²
Maximum Colors	16.7 million
Touchscreen	Projective Capacitive (multitouch)

Power Specifications

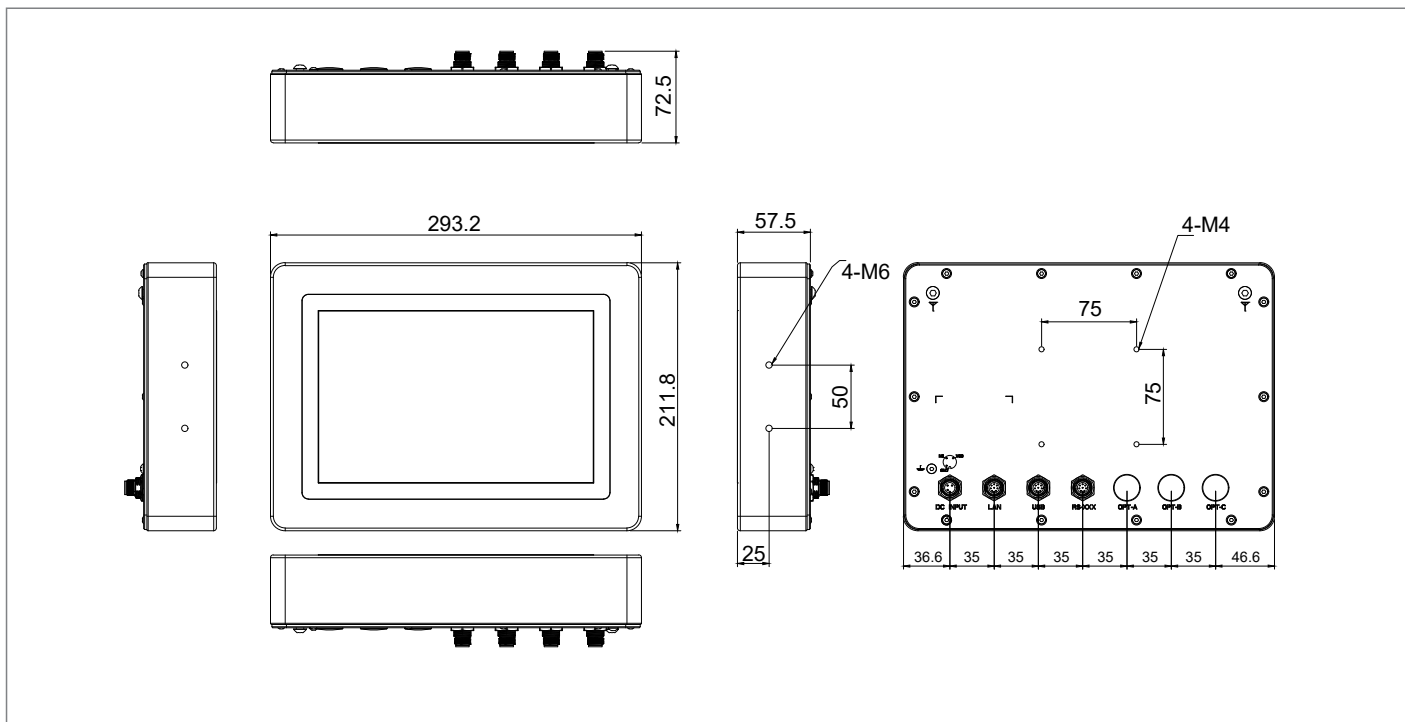
Power Input	Available with 12V 8-36V (wide power input)
Power over Ethernet	PoE function 802.3at (optional)
Power Connector	3-pin M12
Power Consumption	Depending on Configuration

Operation Systems

Standard Support	Ubuntu Windows 7 Windows 10
------------------	-----------------------------------

Dimensions

(units in mm)



Environmental and Mechanical

Enclosure Material	Stainless Steel
Front Bezel	Stainless Steel
IP Rating	IP69K
Dimensions	293.2 (W) x 211.8 (H) x 57.5 (D) mm
Weight	3600 grams
Temperature	Commercial: 0° to +50° C
Relative Humidity	10 to 90 %
MTBF	50 000 Hours
Shock	15G half-sine 11 ms duration
Vibration	1 Grms random 5-500Hz hr/axis
Certification	Compliant with CE / FCC / RoHS / REACH directives

Modular Expansion Options

Power Expansion Module	TXB-P1-12V-LAN1 (12V 3A)
	TXB-P1-1030V-LAN1 (8-36V 5A)
	TXB-P1-12V-POE1 (12V 3A) or (PoE 802.3at)

Mounting Options

VESA Mounting	75*75 VESA MIS-D Standard (separate purchase)
Yoke Mounting	50mm Yoke Standard (separate purchase)



DPS-65VB-M12

- 12V / 5.4A / 65W POWER ADAPTOR
- M12 A-CODE 3-PIN FEMALE CONNECTOR



M12-LAN-300

- M12 A-CODE 8-PIN FEMALE TO RJ45 LAN FEMALE CABLE
- CABLE LENGTH 300CM



M12-2USB-300

- M12 A-CODE 8-PIN FEMALE TO 2x USB 2.0 TYPE-A FEMALE CABLE
- CABLE LENGTH 300CM



M12-SERIAL-300

- M12 A-CODE 8-PIN FEMALE TO D-SUB 9-PIN SERIAL MALE CABLE
- CABLE LENGTH 300CM

Ordering Information

TWP1010-xxxxx-Rxx-Mxxx-Lxxx-xxxx-xxxx

	Code	Description
Processor	E8000	Intel Atom x5-E8000
	N3710	Intel Pentium N3710
Memory	R20	2GB SO-DIMM DDR3L
	R40	4GB SO-DIMM DDR3L
	R80	8GB SO-DIMM DDR3L
Storage	M064	64GB M.2 SSD
	M128	128GB M.2 SSD
Power Expansion	L112	TXB-P1-12V-LAN1 (12V 3A)
	L130	TXB-P1-1030V-LAN1 (8-36V 5A)
	LPOE	TXB-P1-12V-POE1 (12V 3A) or (PoE 802.3at)
Wi-Fi / Bluetooth	-	-
	9377	Qualcomm QCA9377 802.11a/b/g/n/ac (2.4 + 5GHz) + Bluetooth 5
Custom ID	XXXX	Custom Part number ID for customized Software loader and special component (BOM)

* Feel free to contact us for customization requests.

Power Adaptor

DPS-65VB-M12 (separate purchase)

Cables

M12 Cables (separate purchase)



DPS-65VB-M12

- 12V / 5.4A / 65W POWER ADAPTOR
- M12 A-CODE 3-PIN FEMALE CONNECTOR



M12-LAN-300

- M12 A-CODE 8-PIN FEMALE TO RJ45 LAN FEMALE CABLE
- CABLE LENGTH 300CM



M12-2USB-300

- M12 A-CODE 8-PIN FEMALE TO 2x USB 2.0 TYPE-A FEMALE CABLE
- CABLE LENGTH 300CM



M12-SERIAL-300

- M12 A-CODE 8-PIN FEMALE TO D-SUB 9-PIN SERIAL MALE CABLE
- CABLE LENGTH 300CM



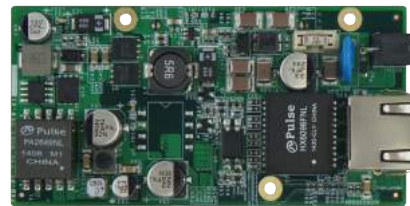
TXB-P1-12V-LAN1

- 12V DC POWER INPUT
- 1x RJ45 LAN CONNECTOR



TXB-P1-1030V-LAN1

- 8-36V DC WIDE POWER INPUT
- 1x RJ45 LAN CONNECTOR



TXB-P1-12V-POE1

- POWER OVER ETHERNET (802.3at)
- 12V DC POWER INPUT
- 1x RJ45 CONNECTOR